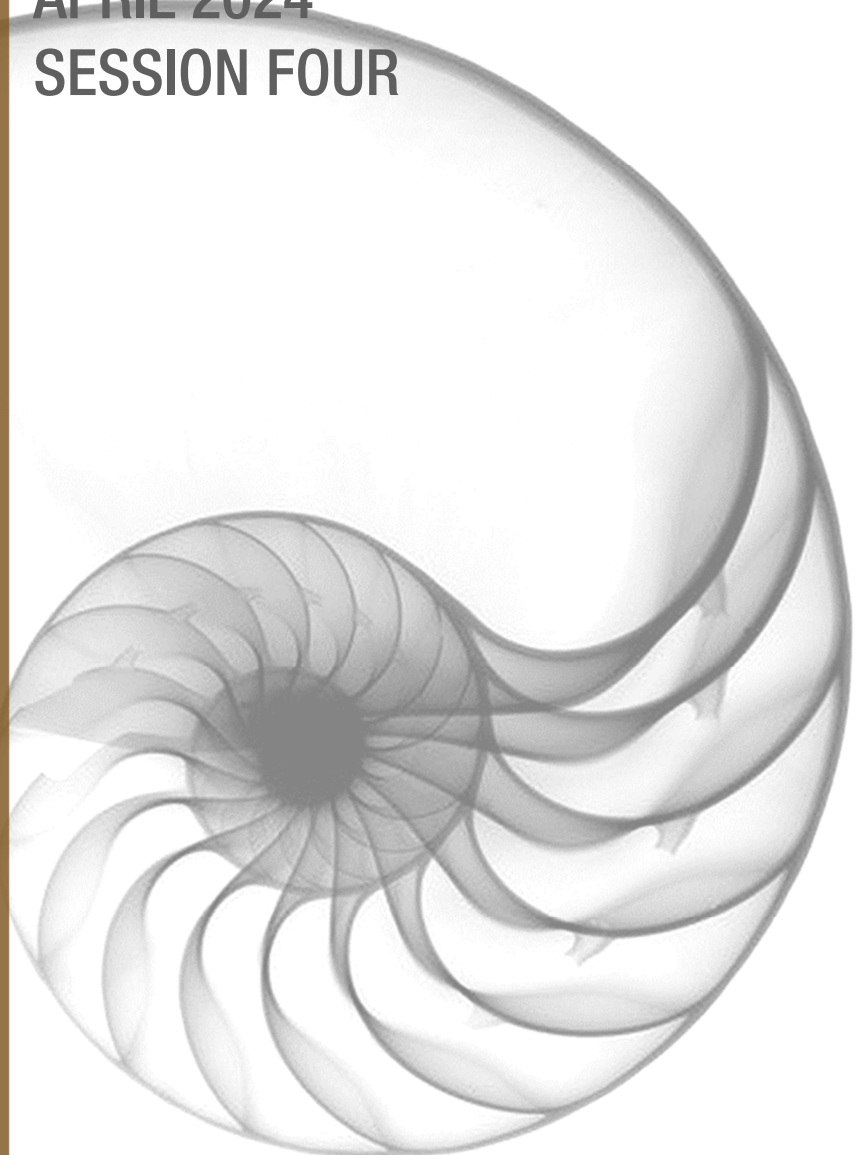


PATHBUILDERS®
PERCEPTA®
WINTER 2024

MAPPING YOUR CAREER PATH

APRIL 2024
SESSION FOUR



MAPPING YOUR CAREER PATH

APRIL 2024 | SESSION FOUR

WHY YOU NEED TO BE INTENTIONAL ABOUT YOUR CAREER

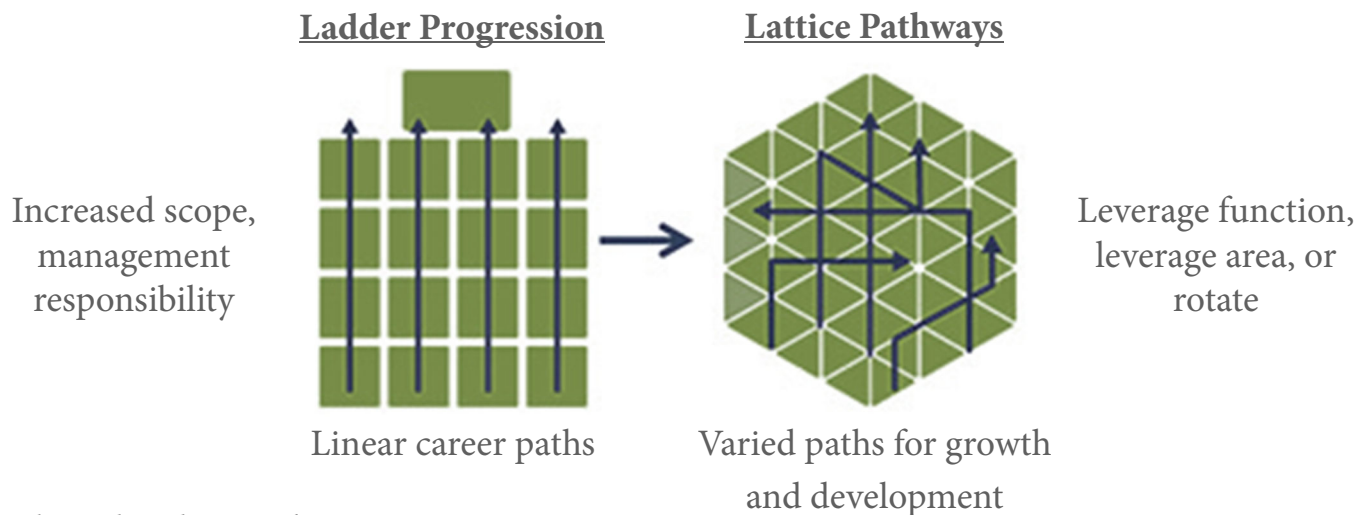
Decide where to go based on what matters to you

- Top value - meaningful work, sense of accomplishment, friendly/social workplace, financial success, flexibility/work-life balance
- Love/Loathe It list
- Key job attributes

CAREER PROGRESSION

- “Progression” has widely varying definitions
- Pathbuilders data highlights:
 - Developing new skills
 - Increasing in responsibility
 - Change in salary
 - Being seen as a subject matter expert
- Without your input and feedback, your organization makes assumptions about you

LADDERS VS LATTICES



Benko and Anderson, *The Corporate Lattice*, 2010

NOTES

MAPPING YOUR CAREER PATH

APRIL 2024 | SESSION FOUR

HOW BUSINESS WORKS

- People are busy; the organization's needs are immediate
- You are perceived as being good at certain things; those perceptions shape peoples' ideas about:
 - Your desired career path
 - What motivates you
 - Your development plan, etc.

HOW IT CAN WORK

- Be self-aware
 - Define your career goals, motivations, and interests
 - Consciously work on your development plan
- Communicate broadly in the organization
 - Your talents, interests, motivations
 - Align interests to directional needs of the organization

CAREER PLANNING

- The integration of your goals, personal interests, personal development, organizational need, and internal marketing
- Career planning
 - Job enrichment
 - Positional progression
 - Personal fulfillment

Career Planning = conscious pathing and opportunistic reaction

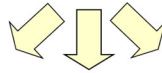
NOTES

MAPPING YOUR CAREER PATH

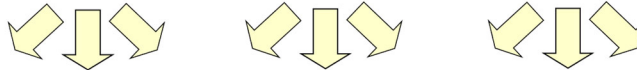
APRIL 2024 | SESSION FOUR

YOUR CAREER MAP: FORWARD

What are three options for your next move?



What opportunities could these roles lead you to?



Map all the potential paths –

What positions are available on these paths?

Are there opportunities **not** available on these paths?

YOUR CAREER MAP: BACKWARD



What position do you aspire to?



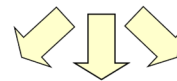
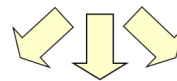
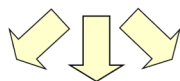
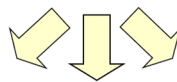
What jobs/assignments are necessary pre-cursors?



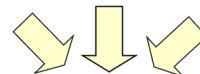
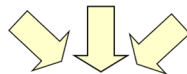
Are you on path for any of these assignments?

If not, how can you prepare yourself?

COMPARING YOUR CAREER MAPS



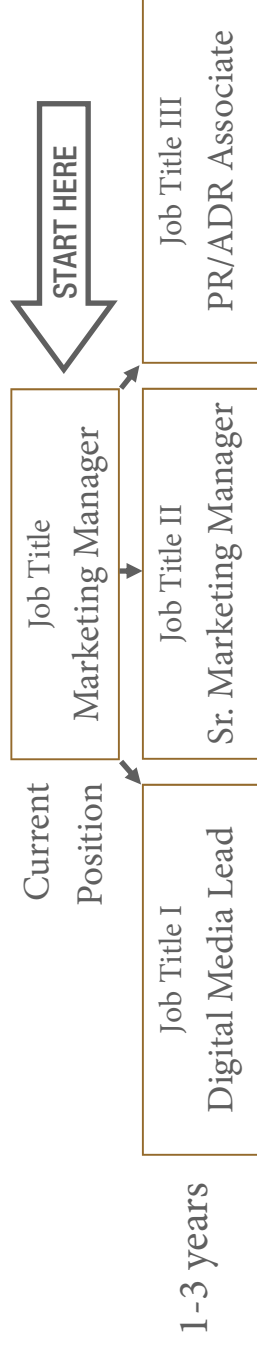
How similar or different are the two maps?



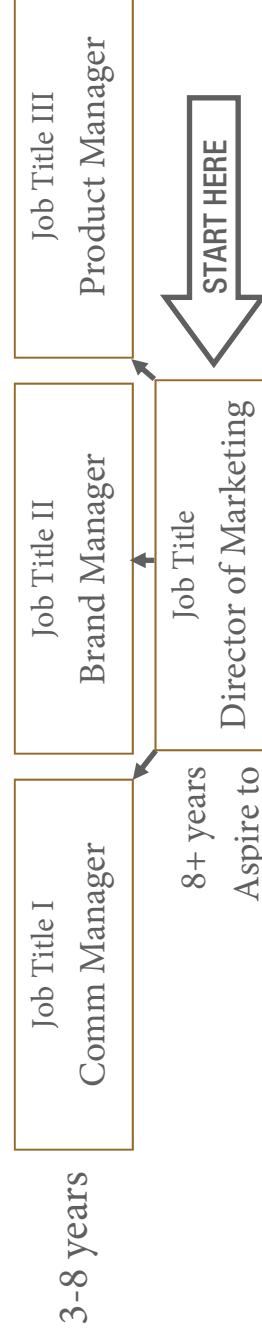
CAREER MAPPING EXERCISE

When mapping your career, there are two approaches you can take: **forward mapping** and **backward mapping**.

- Forward Mapping - for your next potential move, consider **all** the potential roles, not just the next logical one.
 - By considering a wider range of positions for your next move, you create even more options for yourself later.



- Backward Mapping - envision the role you ultimately see yourself in. From the “ultimate role,” work backwards, and consider what roles or assignments are necessary precursors.
 - What roles did those in the “ultimate role” have?

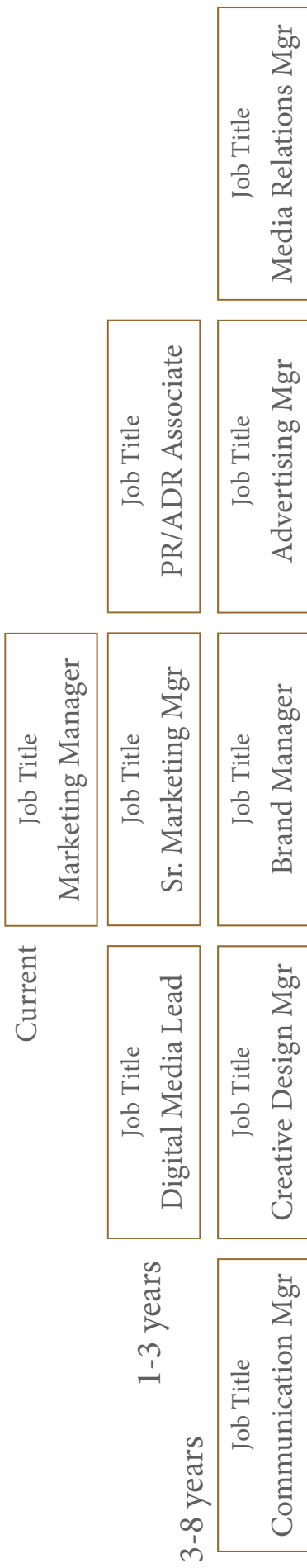


Once you have created forward and backward maps, compare them: how similar or different are they? Where are there areas of overlap? Where are there gaps? What are the necessary skills and experiences you could be building now? Are there special projects you could ask for or teams you could be apart of to expose yourself to new areas and expose others to your work?

After reviewing an example, complete a career map for yourself using both forward and backward mapping.

CAREER MAPPING EXERCISE

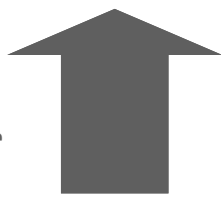
Forward Positions



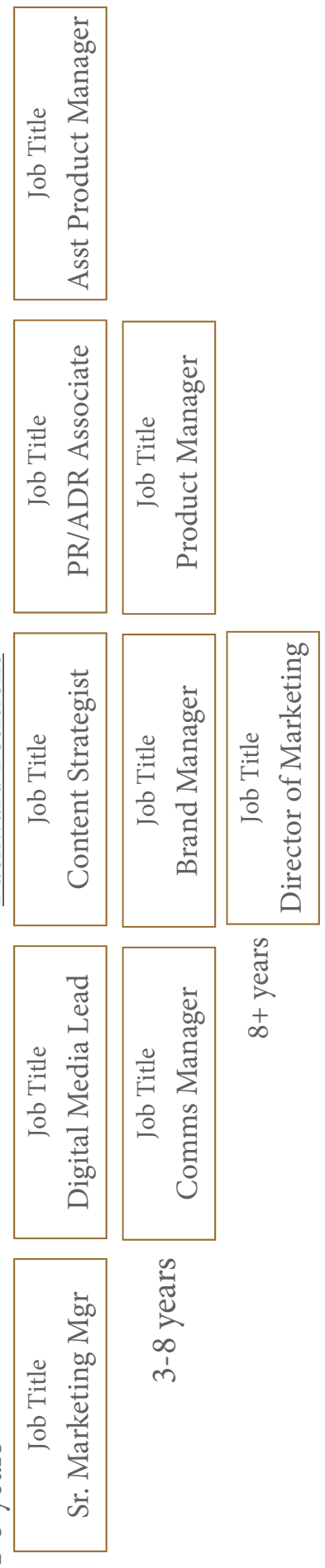
ACTION PLAN

<p>Identify the requirements for these various positions. Note areas of commonality.</p>	<p><u>Education</u></p> <ul style="list-style-type: none"> B.S. or B.A Digital Marketing Cert. 	<p><u>Skills</u></p> <ul style="list-style-type: none"> Creative & Technical Writing Design Software 	<p><u>Experiences</u></p> <ul style="list-style-type: none"> Market Analytics Work People Management
--	--	--	--

1-3 years



Backward Positions



CAREER MAPPING EXERCISE

Forward Positions

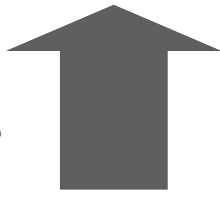
Current	Job Title		
1-3 years	Job Title	Job Title	Job Title
3-8 years	Job Title	Job Title	Job Title

<p>Identify the requirements for these various positions. Note areas of commonality.</p>	<p><u>Education</u></p>	<p><u>Skills</u></p>	<p><u>Experiences</u></p>
--	-------------------------	----------------------	---------------------------

1-3 years

Job Title	Job Title	Job Title	Job Title
3-8 years	Job Title	Job Title	Job Title
8+ years	Job Title	Job Title	Job Title

ACTION PLAN 1-3 years



MAPPING YOUR CAREER PATH

APRIL 2024 | SESSION FOUR

AFTER MAPPING:

- Identifying skills and experiences common to a number of positions prepares you for seeking opportunities and reacting to unexpected opportunities that arise
- Take time to explore possible paths to you
- Others can help you develop your career map

CAREER CONVERSATIONS TODAY

- Receiving feedback is more essential than ever
- Who needs to be aware of your career interests?
- Leverage your Percepta® experience for support!

BALANCING PRIORITIES

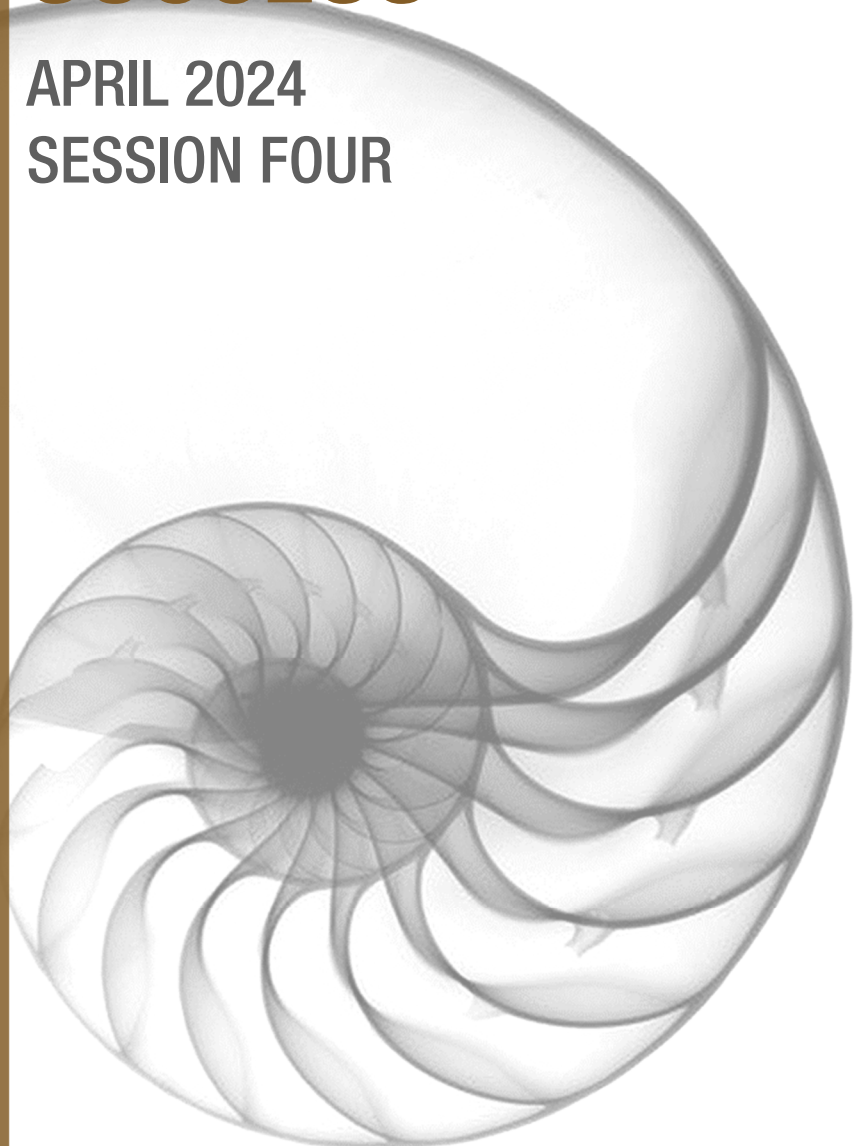
- We must define “balance” for ourselves
- Consider what your priorities are in the roles you play
- Dividing time, energy, and resources by focusing on what is valued helps keep our roles in balance
- Critical to factor priorities into your career map

NOTES

PATHBUILDERS®
PERCEPTA®
WINTER 2024

POSITIONING YOURSELF FOR SUCCESS

APRIL 2024
SESSION FOUR



POSITIONING YOURSELF FOR CAREER SUCCESS

APRIL 2024 | SESSION FOUR

MODEL—PLANNING FOR SUCCESS

Positioning Statement

Your Career Map

Organizational Needs

DEFINING THE OPPORTUNITIES, NOT PROBLEMS

- The organization's big goals
 - What is most important in 2024?
- The organization's big challenges
 - What keeps your leaders up at night?
- The organization's "special needs"
 - Task forces
 - Launches
 - Special projects

ALIGNING TO OPPORTUNITIES

- What can you uniquely bring to a goal, challenge, or special need?
 - Knowledge—product, customer, market, educational
 - Experience—functional, field, back office, outside
 - Relationships—breadth inside, exposure outside
 - Interest—personal research or desire to learn
 - Other—what makes you a unique value?

NOTES

POSITIONING YOURSELF FOR CAREER SUCCESS

APRIL 2024 | SESSION FOUR

ALIGNING TO OPPORTUNITIES—EXAMPLE

KEY ORGANIZATIONAL GOALS

What is most important this year?
What is in the 5-year plan?
(revenue, product development, efficiency, etc.)

- Grow revenues by 25%
- Increase market share by 10%
- Launch new product offering
- Reorganize IT function

PRESSING CHALLENGES

What topics/concerns are frequently discussed?
(competition, market, quality, innovation, customer insights, cost control, etc.)

- Freeze on headcount
- Increasing focus on innovation

SPECIAL NEEDS

What processes are being examined?
What are you hiring consultants to do?
What long-term projects are there?

- Consultants bringing innovation expertise
- Re-aligning functions to interact with IT in new ways

ALIGNING TO OPPORTUNITIES

Roles, projects, contributions that you can make, task forces to join, etc.

- Be a resource to the innovation consulting team
- Leverage relationships to create connections for consultants with key IT subject matter experts

WHAT YOU UNIQUELY BRING TO THE TABLE

Knowledge (product, customer, educational, competitive, your research, etc.); Experiences (roles, functions, community work, past jobs, etc.); Relationships (internal, external, customers, community, etc.); Interests (learnings, research, etc.); Other??

- Diverse product knowledge
- Learnings and relationships from conference on innovation
- Understanding of current IT structure from past project management role
- Experience leading technical people from past role

NOTES

ALIGNING TO OPPORTUNITIES—QUESTIONS

KEY ORGANIZATIONAL GOALS

What is most important this year?
What is in the 5-year plan? (revenue, product development, efficiency, etc.)

PRESSING CHALLENGES

What topics/concerns are frequently discussed?
(competition, market, quality, innovation, customer insights, cost control, etc.)

SPECIAL NEEDS

What processes are being examined?
What are you hiring consultants to do?
What long-term projects are there?

ALIGNING TO OPPORTUNITIES

Roles, projects, contributions that you can make, task forces to join, etc.

WHAT YOU UNIQUELY BRING TO THE TABLE

Knowledge (product, customer, educational, competitive, your research, etc.); Experiences (roles, functions, community work, past jobs, etc.); Relationships (internal, external, customers, community, etc.); Interests (learnings, research, etc.); Other??

POSITIONING YOURSELF FOR CAREER SUCCESS

APRIL 2024 | SESSION FOUR

ALIGNING TO OPPORTUNITIES

KEY ORGANIZATIONAL GOALS

PRESSING CHALLENGES

SPECIAL NEEDS



ALIGNING TO OPPORTUNITIES



WHAT YOU UNIQUELY BRING TO THE TABLE

POSITIONING YOURSELF FOR CAREER SUCCESS

APRIL 2024 | SESSION FOUR

POSITIONING STATEMENTS—EXAMPLE

Clearly describes your value and your direction

“Using my creativity and communication skills, I will help decrease our customer response time and achieve my personal goals by becoming a trainer for our new workflow project.”

“Using my proven abilities to organize information and communicate with individuals across the organization, I will help to increase employee engagement and achieve my personal goals by seeking a leadership role in our customer support environment.”

MY POSITIONING STATEMENT

“Using my

[key skills and qualities]

together with my desire to build/grow/lead

[what I need to demonstrate to achieve my goals]

I will achieve my personal goals and help the organization by

[what I want to accomplish / where I want to be]

MENTORING TIME

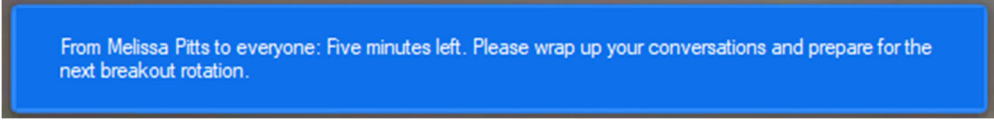
APRIL 2024 | SESSION FOUR

INSTRUCTIONS FOR MENTORING TIME

Career direction is such a key theme to the Percepta® program that we have adjusted your Mentoring Time. You will have the opportunity to have a 1:1 session with your Mentor to discuss your career plan:

Each Mentee will have 20 minutes with their Mentor. Mentees, as you are moved to and out of the breakout room, please keep the following in mind:

- We will send broadcast messages during your 1:1 letting you know how much time is remaining and when your time is up. Messages will appear in blue boxes, for example:



From Melissa Pitts to everyone: Five minutes left. Please wrap up your conversations and prepare for the next breakout rotation.

- Please **DO NOT** leave the breakout room before your time has ended. When rotations are over, you will be moved by the Pathbuilders team and will **ONLY** need to accept the request to be moved back to the main room.
- Once your 1:1 is over you are free to leave the meeting.

If you have any questions or challenges, **please text Adriana at 770-261-6576.**

PATHBUILDERS®
PERCEPTA®
WINTER 2024

ONE-ON-ONE MENTORING TIME

APRIL 2024
SESSION FOUR

